

THE SMART MONEY IS ON



# OFF-THE-ROAD TIRE DATA

AND REFERENCE BOOK



# OTR TIRES DESIGNED TO DELIVER SUPERIOR PERFORMANCE

---

We say, “The Smart Money is on Double Coin.” When it comes to investing in quality and performance, Double Coin is a trusted and intelligent option in the tire market. Double Coin offers a comprehensive number of high-quality Radial OTR tire products engineered to the industry’s highest standards.

Every Radial OTR tire is built to provide optimum performance and increased tire life through uniform wear, as well as an enhanced ride and handling for operator comfort. We aim to become the tire partner you turn to, year after year, by continually earning your trust and supporting you throughout the life of your tires.



## CONSTRUCTION, MINING, PORT, AND AIRPORT



Grading



Mobile Crane



Skid Steer



Earthmover



Haulage



Loader



Industrial/Port



Intermodal



Ground Support  
Equipment

6

**REM-1**  
(G2)

- Bridgestone VUT
- Michelin XTLA

7

**REM-2**  
(E3/L3)

- Bridgestone VMT
- Michelin XHA
- Goodyear RT-3B

8

**REM-10**  
(E3+/L3+)

- Bridgestone VLT
- Michelin XADN
- Goodyear RT-3B

9

**REM-12**  
(L5)

- Bridgestone VSDL
- Michelin X Mine D2
- Goodyear RL-5K

10

**REM-2S**  
(E2/L2/G2)**NEW TIRE**

- Michelin X SnoPlus
- Bridgestone VSW
- Nokian Hakkapeliitta

11

**REM-9**  
(E4)

- Bridgestone VMTP
- Michelin XDT
- Goodyear RT4A

12

**REM-18**  
(L5)

- Bridgestone VSDL
- Michelin XLDD2
- Goodyear RL-5K

13

**REM-8**  
(MCS)

- Bridgestone VHS
- Michelin XGC

14

**REM-3**  
(SS)

- Michelin XZSL

15

**REM-6**  
(IND)

- Michelin XZM

16

**REM-4**  
(GSE)**NEW TIRE**

- Conti ContiRV20
- Michelin XZR
- Camso AIR 550 (Bias)
- Maxam MS802 (Bias)

17

**REM-26**  
(GSE)**NEW TIRE**

- Conti ContiRV20
- Michelin XZR
- Camso AIR 561 (Bias)
- Maxam MS802 (Bias)

18

**REM-17**  
(IND)

- Bridgestone VCH

# REM-1



## (G2) GRADER

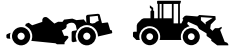
Double Coin engineered this radial Off-The-Road tire with a multi-purpose tread design for exceptional traction and even wear. The wide footprint of this OTR offers excellent flotation while also ensuring a smooth ride.

**EXPLORE**



PRODUCT CODE	TIRE SIZE	PATTERN	LOAD SYMBOL	SPEED MAX (KM/H)	SPEED MAX (MPH)	OVERALL DIAMETER (IN)	SECTION WIDTH (IN)	TREAD DEPTH (32NDS)	RIM	SINGLE MAX LOAD/PRESSURE	WEIGHT	TYPE
1107113241	13.00R24	REM-1	★TG	40	25	51	14	38	8.00TG	6600lb/54psi	247lb/112kg	TL
1107114241	14.00R24	REM-1	★TG	40	25	54	15	38	8.00TG	8030lb/54psi	285lb/129kg	TL

# REM-2



## (E3/L3) EARTHMOVER/LOADER TIRE

The Double Coin REM-2 Off-The-Road radial features an aggressive self-cleaning tread design. Engineered to deliver a smooth ride and superior traction in all types of terrain, the REM-2 is an OEM Certified OTR with an advanced casing design that promotes retreadability.

**EXPLORE**



PRODUCT CODE	TIRE SIZE	PATTERN	LOAD SYMBOL	SPEED MAX (KM/H)	SPEED MAX (MPH)	OVERALL DIAMETER (IN)	SECTION WIDTH (IN)	TREAD DEPTH (32NDS)	RIM	SINGLE MAX LOAD/PRESSURE	WEIGHT	TYPE
1107167251	17.5R25	REM-2	★★	50 10	30 5	53	18	34	14.00/1.5	11990lb/76psi 18700lb/94psi	347lb/157kg	TL
1107160251	20.5R25	REM-2	★★	50 10	30 5	58	21	39	17.00/2.0	16060lb/76psi 25300lb/94psi	510lb/231kg	TL
1107163251	23.5R25	REM-2	★★	50 10	30 5	64	24	45	19.50/2.5	20350lb/76psi 31900lb/94psi	741lb/336kg	TL
1107166252	26.5R25	REM-2	★★	50 10	30 5	69	27	47	22.00/3.0	25300lb/76psi 40700lb/94psi	1021lb/463kg	TL
1107162955	29.5R25	REM-2	★★	50 10	30 5	73	29	50	25.00/3.5	30800lb/76psi 49280lb/94psi	1295lb/587kg	TL
1107167565	750/65R25	REM-2	★★	50 10	30 5	64	30	54	24.00/3.0	23320lb/61psi 40700lb/90psi	1015lb/460kg	TL
1107167765	775/65R29	REM-2	★★	50 10	30 5	68.9	30.3	58	24.00/3.5	26730lb/62psi 45320lb/94psi	1048lb/475kg	TL
1107168765	875/65R29	REM-2	★★	50 10	30 5	73.8	35	60	28.00/3.5	34100lb/62psi 56650lb/94psi	1478lb/ 670kg	TL

# REM-10



## (E3+/L3+) HAULAGE/ARTICULATED TIRE

The OEM Certified REM-10 OTR tire features a multi-function, non-directional tread design for optimum performance. Designed for the rugged needs of articulating trucks, the REM-10 OTR is built with a unique center block tread design, that delivers superior off-the-road traction, and a smooth ride in all types of terrain.



**EXPLORE**

PRODUCT CODE	TIRE SIZE	PATTERN	LOAD SYMBOL	SPEED MAX (KM/H)	SPEED MAX (MPH)	OVERALL DIAMETER (IN)	SECTION WIDTH (IN)	TREAD DEPTH (32NDS)	RIM	SINGLE MAX LOAD/PRESSURE	WEIGHT	TYPE
1087106252	26.5R25	REM-10	★★	50 10	30 5	69	27	51	22.00/3.0	25300lb/76psi 40700lb/94psi	1021lb/463kg	TL
1087102955	29.5R25	REM-10	★★	50 10	30 5	74	29	55	25.00/3.5	30800lb/76psi 49280lb/94psi	1317lb/597kg	TL

# REM-12



## (L5) MINING LOADER TIRE

Built with special cut/chip resistant compounds to withstand severe rock mining applications and promote long-term retreadability, the Double Coin REM-12 OTR has a unique non-directional tread design for optimum performance, and superior traction.

**EXPLORE**



PRODUCT CODE	TIRE SIZE	PATTERN	LOAD SYMBOL	SPEED MAX (KM/H)	SPEED MAX (MPH)	OVERALL DIAMETER (IN)	SECTION WIDTH (IN)	TREAD DEPTH (32NDS)	RIM	SINGLE MAX LOAD/PRESSURE	WEIGHT	TYPE
1107127252	17.5R25	REM-12	★★	10	5	55	19	84	14.00/1.5	15620lb/73psi	554lb/251kg	TL
1107126253	26.5R25	REM-12	★★	10	5	71	27	116	22.00/3.0	33000lb/65psi	1449lb/657kg	TL
1107122956	29.5R25	REM-12	★★	10	5	75	31	126	25.00/3.5	39600lb/65psi	1866lb/864kg	TL

# REM-2S



**NEW  
TIRE**

## (E2/L2/G2) EARTHMOVER/LOADER/ GRADER

The REM-2S is an all-weather/mud and snow (M+S) radial OTR tire designed with a wide, non-directional tread pattern for increased traction and year-round performance, especially in snow and ice conditions. The tread siping allows for increased traction in severe and icy conditions, while the wide tread blocks are designed for a flatter footprint and longer tire life. These features make it an excellent choice in earthmover, loader and grader applications.

**EXPLORE**



PRODUCT CODE	TIRE SIZE	PATTERN	LOAD SYMBOL	SPEED MAX (KM/H)	SPEED MAX (MPH)	OVERALL DIAMETER (IN)	SECTION WIDTH (IN)	TREAD DEPTH (32NDS)	RIM	SINGLE MAX LOAD/ PRESSURE	WEIGHT	TYPE
1107174241	14.00R24 (385/95R24)	REM-2S	★★	50 10	30 5	54	16	30	10.00	12320lb/101psi 20900lb/115psi	298lb/135kg	TL
1107174251†	14.00R25 (385/95R25)	REM-2S	★★	80	50	53.5	15.5	30	10.00/1.5	13230lb/131psi	335lb/152kg	TL
1107177251	17.5R25	REM-2S	★★	50 10	30 5	53	18	36	14.00/1.5	11990lb/76psi 18700lb/94psi	347lb/157kg	TL
1107170251	20.5R25	REM-2S	★★	50 10	30 5	58	21	39	17.00/2.0	16060lb/76psi 25300lb/94psi	510lb/231kg	TL
1107173251	23.5R25	REM-2S	★★	50 10	30 5	64	24	43	19.50/2.5	20350lb/65psi 31900lb/83psi	708lb/321kg	TL

\* Mud and Snow

† DOT approved

# REM-9



## (E4) HAULAGE TIRE

The Double Coin REM-9 OTR radial design offers special compounds to withstand severe mining applications, extend tire life and promote long-term retreadability. The REM-9 OTR tire is designed with a non-directional center rib tread pattern for enhanced off-the-road traction. Its deep tread depth also provides extended tread life in a wide variety of conditions.

**EXPLORE**



PRODUCT CODE	TIRE SIZE	PATTERN	LOAD SYMBOL	SPEED MAX (KM/H)	SPEED MAX (MPH)	OVERALL DIAMETER (IN)	SECTION WIDTH (IN)	TREAD DEPTH (32NDS)	RIM	SINGLE MAX LOAD/PRESSURE	WEIGHT	TYPE
1087206255**	26.5R25	REM-9 (A)	★★	50 10	30 5	70	27	69	22.00/3.0	25300lb/76psi 40700lb/94psi	1191lb/540kg	TL
1087202958**	29.5R25	REM-9 (A)	★★	50 10	30 5	75	30	76	25.00/3.5	30800lb/76psi 49280lb/94psi	1434lb/650kg	TL
<b>**E4/L4</b>												
PRODUCT CODE	TIRE SIZE	PATTERN	LOAD SYMBOL	SPEED MAX (KM/H)	SPEED MAX (MPH)	OVERALL DIAMETER (IN)	SECTION WIDTH (IN)	TREAD DEPTH (32NDS)	RIM	SINGLE MAX LOAD/PRESSURE	WEIGHT	TYPE
1087201833	18.00R33	REM-9 (A)	★★	50	30	73	20	69	13.00/2.5	23980lb/102psi	1037lb/470kg	TL
1087201834	18.00R33	REM-9 (S)	★★	50	30	73	20	69	13.00/2.5	23980lb/102psi	1037lb/470kg	TL
1087201835	18.00R33	REM-9 (B)	★★	50	30	73	20	69	13.00/2.5	23980lb/102psi	1037lb/470kg	TL
1087202452	24.00R35	REM-9 (A)	★★	50	30	85	26	87	17.00/3.5	40700lb/102psi	1713lb/777kg	TL
1087202453	24.00R35	REM-9 (S)	★★	50	30	85	26	87	17.00/3.5	40700lb/102psi	1713lb/777kg	TL
1087202454	24.00R35	REM-9 (B)	★★	50	30	85	26	87	17.00/3.5	40700lb/102psi	1713lb/777kg	TL
1087202135	21.00R33	REM-9 (B)	★★	50	30	77	22	69	15.00/3.0	30864lb/102psi	1251lb/567kg	TL

Compounds: **A** cut/chip; **S** standard; **B** heat

# REM-18



## (L5) LOADER TIRE

The Double Coin REM-18 radial OTR is built for severe loader applications. This OTR tire is constructed with special chip and cut resistant compounds to promote extended original tread life and long-term retreadability.

Designed with a wide footprint and center rib for stability, the REM-18 OTR features a directional tread design for increased forward traction.



**EXPLORE**

PRODUCT CODE	TIRE SIZE	PATTERN	LOAD SYMBOL	SPEED MAX (KM/H)	SPEED MAX (MPH)	OVERALL DIAMETER (IN)	SECTION WIDTH (IN)	TREAD DEPTH (32NDS)	RIM	SINGLE MAX LOAD/PRESSURE	WEIGHT	TYPE
1087183532	35/65R33	REM-18	★★	10	5	81	37	123	28.00/3.5	60076lb/94psi	1026kg/2255lb	TL

# REM-8



## (MCS) HIGH-SPEED CRANE TIRE

The REM-8 high-speed crane OTR tire is U.S. DOT approved for on-highway use. The OEM Certified REM-8 is designed with a universal tread pattern to improve traction and deliver a more comfortable ride.

**EXPLORE**



PRODUCT CODE	TIRE SIZE	PATTERN	LOAD SYMBOL	SPEED MAX (KM/H)	SPEED MAX (MPH)	OVERALL DIAMETER (IN)	SECTION WIDTH (IN)	TREAD DEPTH (32NDS)	RIM	SINGLE MAX LOAD/PRESSURE	WEIGHT	TYPE
1117184241	14.00R24 (385/95R24)	REM-8	★★★	70	43	54	16	31	10.00W	13948lb/144psi	294lb/133kg	TT
1117184251	14.00R25 (385/95R25)	REM-8	★★★	70	43	54	16	31	10.00/1.5	13948lb/144psi	298lb/135kg	TL
1117186251	16.00R25 (445/95R25)	REM-8	★★★	70	43	59	17	33	11.25/2.0	16280lb/130psi	461lb/209kg	TL
1117196251	16.00R25 (445/95R25)	REM-8	★★	80	50	59	17	33	11.25/2.0	14740lb/130psi	448lb/203kg	TL
1117190251	20.5R25 (525/80R25)	REM-8	★★	70	43	59	21	39	17.00/2.0	17065.4lb/101psi	525lb/238kg	TL
1117190252	525/80R25 (20.5R25)	REM-8	★★	80	50	59	21	39	17.00/2.0	15620lb/101psi	525lb/238kg	TL

For Technical Service Bulletins, please refer to page 22

# REM-3



## (SS) SKID STEER TIRE

The Double Coin REM-3 OTR features a special uni-directional tread design for maximum traction in Off-the-Road skid loader applications. Its radial design offers optimum performance and increased tire life, as well as an enhanced ride and handling.

**EXPLORE**



PRODUCT CODE	TIRE SIZE	PATTERN	LOAD SYMBOL	SPEED MAX (KM/H)	SPEED MAX (MPH)	OVERALL DIAMETER (IN)	SECTION WIDTH (IN)	TREAD DEPTH (32NDS)	RIM	SINGLE MAX LOAD/PRESSURE	WEIGHT	TYPE
1106340650	10R16.5	REM-3	128A5	25	15	30	10	23	8.25	3900lb/54psi	71lb/32kg	TL
1106342650	12R16.5	REM-3	141A5	25	15	33	12	29	9.75	5600lb/54psi	93lb/42kg	TL

# REM-6



## (IND) INDUSTRIAL LUG TIRE

The Double Coin REM-6 radial design delivers optimum performance and traction in industrial lug, crane and port applications. The REM-6 is engineered with special tread compounds to run cool, fight rapid wear and deliver remarkable stability.

**EXPLORE**



PRODUCT CODE	TIRE SIZE	PATTERN	LOAD SYMBOL	SPEED MAX (KM/H)	SPEED MAX (MPH)	OVERALL DIAMETER (IN)	SECTION WIDTH (IN)	TREAD DEPTH (32NDS)	RIM	SINGLE MAX LOAD/PRESSURE	WEIGHT	TYPE
1106355086	5.00R8	REM-6	111A5	25	15	18	5	31	3.00D	2398lb/145psi	23lb/10kg	T&F
1106356096	6.00R9	REM-6	121A5	25	15	21	6	31	4.00E	3190lb/145psi	38lb/17kg	T&F
1106356505	6.50R10	REM-6	128A5	25	15	23	7	34	5.00	3968lb/145psi	45lb/20kg	T&F
1106357026	7.00R12	REM-6	136A5	25	15	26	7	35	5.00S	4928lb/145psi	60lb/27kg	T&F
1106353156	315/70R15	REM-6	165A5	25	15	33	12	45	8.00	11330lb/145psi	131lb/59kg	TL, T&F
1106357056	7.00R15	REM-6	143A5	25	15	29	8	35	5.50	5995lb/145psi	71lb/32kg	T&F
1106357556	7.50R15	REM-6	146A5	25	15	30	8	38	6.00	6600lb/145psi	82lb/37kg	T&F
1106358255	8.25R15	REM-6	153A5	25	15	33	9	40	6.50	8050lb/145psi	104lb/47kg	T&F
1106352275	225/75R15	REM-6	149A5	25	15	28	9	31	7.00	7150lb/145psi	71lb/32kg	T&F
1106352575	250/70R15	REM-6	153A5	25	15	29	10	33	7.00	8030lb/145psi	78lb/35kg	T&F
1106351006	10.00R20	REM-6	166A5	25	15	42	12	44	7.50	11660lb/145psi	192lb/87kg	T&F
1106351206	12.00R20	REM-6	176A5	25	15	45	13	52	8.50	19570lb/145psi	245lb/111kg	T&F
1106351246	12.00R24	REM-6	178A5	25	15	49	13	49	8.50	20670lb/145psi	278lb/126kg	T&F
1106354241	14.00R24	REM-6	193A5	25	15	56	15	81	10.00	27340lb/145psi	512lb/232kg	T&F
1106354242	14.00R24	REM-6	193A5	25	15	56	15	81	10.00	27340lb/145psi	512lb/232kg	TL
1106351825	18.00R25	REM-6	207A5	25	15	65	20	81	13.00/2.5	46480lb/145psi	915lb/415kg	TL

# REM-4



**NEW  
TIRE**

## (GSE) GROUND SUPPORT EQUIPMENT

The REM-4 industrial tire, is an excellent choice for Ground Support Equipment (GSE). This drive position tire is designed with traction in mind. The durable all-steel radial casing tire delivers a larger footprint for a longer tread life, making it a reliable option for GSE operations from airport tarmacs to industrial ports. With longevity and cost-efficiency in focus, the REM-4 ensures dependable and efficient performance for GSE vehicles.

**EXPLORE**



PRODUCT CODE	TIRE SIZE	PATTERN	LOAD SYMBOL	SPEED MAX (KM/H)	SPEED MAX (MPH)	OVERALL DIAMETER (IN)	SECTION WIDTH (IN)	TREAD DEPTH (32NDS)	RIM	SINGLE MAX LOAD/PRESSURE	WEIGHT	TYPE
1106407026	7.00R12	REM-4	136A5	25	15	26.3	7.5	34	5.00S	4938lb/145psi	58.4lb/26.5kg	TT

# REM-26



**NEW  
TIRE**

## (GSE) GROUND SUPPORT EQUIPMENT

The REM-26 industrial tire, designed for steer positions, is the go-to choice for Ground Support Equipment (GSE). With excellent traction and stability, it ensures reliable performance from airport tarmacs to industrial ports. Built for durability and longevity, this all-steel radial casing tire delivers high performance at a lower cost per hour, making it an essential asset in the aviation industry.

**EXPLORE**



PRODUCT CODE	TIRE SIZE	PATTERN	LOAD SYMBOL	SPEED MAX (KM/H)	SPEED MAX (MPH)	OVERALL DIAMETER (IN)	SECTION WIDTH (IN)	TREAD DEPTH (32NDS)	RIM	SINGLE MAX LOAD/PRESSURE	WEIGHT	TYPE
1106266096	6.00R9	REM-26	121A5	25	15	21	6.4	25	4.00E	3197lb/145psi	34.8lb/15.8kg	TT

# REM-17



## (IND) INDUSTRIAL LUG TIRE

The Double Coin REM-17 radial design promotes optimum performance, wear and stability in industrial lug and port environments. This tire is engineered with special tread compounds to fight rapid wear and enhance traction in all port applications.

**EXPLORE**



PRODUCT CODE	TIRE SIZE	PATTERN	LOAD SYMBOL	SPEED MAX (KM/H)	SPEED MAX (MPH)	OVERALL DIAMETER (IN)	SECTION WIDTH (IN)	TREAD DEPTH (32NDS)	RIM	SINGLE MAX LOAD/PRESSURE	WEIGHT	TYPE
1106371625	16.00R25	REM-17	200A5	25	15	59	17	70	11.25/2.0	30860lb/145psi	265kg/585lb	TL

# SERVICE INFORMATION

## DOUBLE COIN FOR GRADER SERVICE – 40 KM/H (25 MPH) MAXIMUM SPEED

Grader  
DISTANCE – Unlimited

TIRE SIZE DESIGNATION	KPA	200	225	250	275	300	325	350	375
	PSI	29	33	36	40	44	47	51	54
13.00R24	KG	1850	2000	2180	2360	2500	2650	2800	3000*
	LB	4080	4400	4800	5200	5520	5840	6150	6600*
14.00R24	KG	2240	2430	2650	2800	3000	3250	3350	3650*
	LB	4940	5360	5840	6150	6600	7150	7400	8050*

MAXIMUM SPEED	% LOAD CHANGE FROM ABOVE TABLE
40 KM/H (25 MPH)	NO CHANGE
50 KM/H (30 MPH)	-9%

MAXIMUM SPEED	% LOAD CHANGE FROM ABOVE TABLE
60 KM/H (35 MPH)	-18%
65 KM/H (40 MPH)	-27%

MAXIMUM EXCESS LOADS	
LOAD	PRESSURE*
15%	30%
7%	14%

## DOUBLE COIN ROAD SLOW SPEED SERVICE – 10 KM/H (5 MPH) MAXIMUM SPEED

Loaders, Dozers, Lift Trucks & Straddle Carriers  
DISTANCE – Up to 76 m (250 feet) one way

TIRE SIZE DESIGNATION	KPA	400	425	450	475	500	525	550	575	600	625	650
	PSI	58	62	65	69	73	76	80	83	87	91	94
17.5R25	KG	6000	6150	6500	6700	7100*	7300	7500	7750	8000	8250	8500*
	LB	13200	13600	14300	14800	15700*	16100	16500	17100	17600	18200	18700*
20.5R25	KG	8000	8250	8750	9000	9500*	9750	10000	10300	10900	11200	11500*
	LB	17600	18200	19300	19800	20900*	21500	22000	22700	24000	24700	25400*
23.5R25	KG	10300	10600	11200	11500	12150*	12500	12850	13200	13600	14000	14500*
	LB	22700	23400	24700	25400	26800*	27600	28300	29100	30000	30900	32000*
26.5R25	KG	12850	13200	14000	14500	15000*	15500	16000	16500	17000	18000	18500*
	LB	28300	29100	30900	32000	33100*	34200	35300	36400	37500	39700	40800*
29.5R25	KG	15500	16000	17000	17500	18000*	19000	19500	20000	20600	21200	22400*
	LB	34200	35300	37500	38600	39700*	41900	43000	44100	45400	46700	49400*

MAXIMUM SPEED	% LOAD CHANGE FROM ABOVE TABLE
STATIONARY	+60%
CREEP	+30%
4 KM/H (2½ MPH)	+15%

MAXIMUM SPEED	% LOAD CHANGE FROM ABOVE TABLE
10 KM/H (5 MPH)	NO CHANGE
5 KM/H (10 MPH)	-13%
25 KM/H (15 MPH)	-20%

MAXIMUM EXCESS LOADS	
LOAD	PRESSURE*
15%	30%
7%	14%

\* If excess loads are encountered, cold inflation pressures must be increased to compensate for higher loads. For each 1% increase in load, cold inflation pressure must be increased by 2%. Cold inflation pressure shall not exceed 800 kPa (116 psi). Any loads higher than the listed max or an increase of air beyond 116 psi need the written approval of CMA ROTR department.

# SERVICE INFORMATION

## DOUBLE COIN ROAD HAULAGE SERVICE – 50 KM/H (30 MPH) MAXIMUM SPEED

Earthmover (Haulage) Vehicles

DISTANCE - Up to 4 km (2.5 miles) one way

TIRE SIZE DESIGNATION	KPA	275	300	325	350	375	400	425	450	475	500	525
	PSI	40	44	47	51	54	58	62	65	69	73	76
17.5R25	KG	3350	3500	3750	4000	4125	4375	4625	4750	5000	5150	5450*
	LB	7400	7850	8250	8800	9100	9650	10200	10500	11000	11400	12000*
20.5R25	KG	4375	4750	5000	5300	5600	5800	6150	6500	6700	6900	7300*
	LB	9650	10500	11000	11700	12300	12800	13600	14300	14800	15200	16100*
23.5R25	KG	5600	6000	6500	6700	7100	7500	7750	8250	8500	9000	9250*
	LB	12300	13200	14300	14800	15700	16500	17100	18200	18700	19800	20400*
26.5R25	KB	7100	7500	8000	8500	9000*	9500	9750	10300	10600	11200	11500*
	LB	15700	16500	17600	18700	19800*	20900	21500	22700	23400	24700	25400*
29.5R25	KG	8500	9250	9750	10300	10900	11500	11800	12500	12850	13600	14000*
	LB	18700	20400	21500	22700	24000	25400	26000	27600	28300	30000	30900*

TIRE SIZE DESIGNATION	KPA	450	475	500	525	550	575	600	625	650	675	700
	PSI	65	69	73	76	80	83	87	91	94	98	102
13.00R24	KG	3350	3550*	3650	3750	3875	4125	4250	4375	4500	4625	4750*
	LB	7400	7850*	8050	8250	8550	9100	9350	9650	9900	10200	10500*
14.00R24	KG	4000	4125*	4375	4500	4625	4750	5000	5150	5300	5450	5600*
	LB	8800	9100*	9650	9900	10200	10500	11000	11400	11700	12000	12300*
16.00R25	KG	5150	5450*	5600	5800	6000	6300	6500	6700	6900	7100	7300*
	LB	11400	12000*	12300	12800	13200	13900	14300	14800	15200	15700	16100*
18.00R33	KG	7750	8000*	8500	8750	9000	9250	9750	10000	10300	10600	10900*
	LB	17100	17600*	18700	19300	19800	20400	21500	22000	22700	23400	24000*
21.00R33	KG	10000	10300	10900	11200	11500	11800	12500	12850	13200	13600	14000*
	LB	22000	22700	24000	24700	25400	26000	27600	28300	29100	30000	30900*
24.00R35	KG	13200	13600	14000	14500	15500	16000	16500	17000	17500	18000	18500*
	LB	29100	30000	30900	32000	34200	35300	36400	37500	38600	39700	40800*
27.00R49	KG	19500	20000*	20600	21800	22400	23000	23600	25000	25750	26500	27250*
	LB	43000	44100*	45400	48100	49400	50700	52000	55100	56800	58400	60000*
37.00R57	KG	37500	38750*	40000	41250	43750	45000	46250	47500	48750	50000	51500*
	LB	82500	85500*	88000	91000	96500	99000	102000	104500	107500	110000	113500*

MAXIMUM SPEED	% LOAD CHANGE FROM ABOVE TABLE
50 KM/H (30 MPH)	*
45 KM/H (28 MPH)	+2%
40 KM/H (25 MPH)	+3%
35 KM/H (22 MPH)	+4%

MAXIMUM SPEED	% LOAD CHANGE FROM ABOVE TABLE
30 KM/H (18 MPH)	+6%
25 KM/H (16 MPH)	+8%
20 KM/H (10 MPH)	+10%
15 KM/H (9 MPH)	+12%

MAXIMUM EXCESS LOADS	
LOAD	PRESSURE*
15%	30%
7%	14%

\* If excess loads are encountered, cold inflation pressures must be increased to compensate for higher loads. For each 1% increase in load, cold inflation pressure must be increased by 2%. Cold inflation pressure shall not exceed 800 kPa (116 psi). Any loads higher than the listed max or an increase of air beyond 116 psi need the written approval of CMA ROTR department.

# ENGINEERING GUIDE

## INTERNATIONAL LOAD INDEX NUMBERS, KILOGRAM LOADS, AND TRA EQUIVALENT POUND LOADS

Not Applicable to Passenger Car or Truck-Bus Tires

LI	KG	LB	LI	KG	LB	LI	KG	LB	LI	KG	LB	LI	KG	LB
U	45	99	56	224	495	112	1120	2470	168	5600	12300	224	28000	61500
1	46.2	102	57	230	505	113	1150	2540	169	5800	12800	225	29000	64000
2	47.5	105	58	236	520	114	1180	2600	170	6000	13200	226	30000	66000
3	48.7	107	59	243	535	115	1215	2680	171	6150	13600	227	30750	68000
4	50	110	60	250	550	116	1250	2760	172	6300	13900	228	31500	69500
5	51.5	114	61	257	565	117	1285	2830	173	6500	14300	229	32500	71500
6	53	117	62	265	585	118	1320	2910	174	6700	14800	230	33500	74000
7	54.5	120	63	272	600	119	1360	3000	175	6900	15200	231	34500	76000
8	56	123	64	280	615	120	1400	3080	176	1100	15700	232	35500	78500
9	58	118	65	190	640	121	1450	3200	177	7300	16100	233	36500	80500
10	60	132	66	300	660	111	1500	3300	178	7500	16500	234	37500	82500
11	61.5	136	67	307	675	123	1550	3420	179	7750	17100	235	38750	85500
12	63	139	68	315	695	124	1600	3520	180	8000	17600	236	40000	88000
13	65	143	69	325	715	125	1650	3640	181	8250	18200	237	41250	91000
14	67	148	70	335	740	126	1700	3740	182	8500	18700	238	42500	93500
15	69	152	71	345	760	127	1750	3860	183	8750	19300	239	43750	96500
16	71	157	72	355	785	128	1800	4080	184	9000	19800	240	45000	99000
17	73	161	73	365	805	129	1850	4080	185	9250	20400	241	46250	102000
18	75	165	74	375	825	130	1900	4180	186	9500	20900	242	47500	104500
19	77.5	170	75	387	855	131	1950	4300	187	9750	21500	243	48750	107500
20	80	175	76	400	880	132	2000	4400	188	10000	22000	244	50000	110000
21	82.5	180	77	412	910	133	2060	4540	189	10300	22700	245	51500	113500
22	85	185	78	425	935	134	2120	4680	190	10600	23400	246	53000	117000
23	87.5	195	79	437	965	135	2180	4800	191	10900	24000	247	54500	120000
24	90	100	80	450	990	136	2240	4940	192	11200	24690	248	56000	123500
25	92.5	205	81	462	1020	137	2300	5080	193	11500	25350	249	58500	128000
26	95	210	82	475	1050	138	2160	5200	194	11800	26000	250	60000	132500
27	97.5	215	83	487	1070	139	2430	5360	195	12150	26750	251	61500	135500
28	100	220	84	500	1100	140	2500	5520	196	12500	27550	252	63000	139000
29	103	225	85	515	1140	141	2575	5680	197	12850	28300	253	65000	143500
30	106	235	86	530	1170	142	2650	5840	198	13200	29000	254	67000	147500
31	109	240	87	545	1200	143	2725	6000	199	13600	30000	255	69000	152000
32	112	245	88	560	1230	144	2800	6150	200	14000	30900	256	71000	156000
33	115	255	89	585	1280	145	2900	6400	201	14500	32000	257	73000	161000
34	118	260	90	600	1320	146	3000	6600	202	15000	33100	258	75000	165500
35	121	265	91	615	1360	147	30.5	6800	203	15500	34200	259	77500	171000
36	125	275	92	630	1390	148	3150	6950	204	16000	35300	260	80000	176500
37	128	280	93	650	1430	149	3250	7150	205	16500	36400	261	82500	182000
38	132	290	94	670	1480	150	3350	7400	206	17000	37500	262	85000	187500
39	136	300	95	690	1520	151	3450	7600	207	17500	38600	263	87500	193000
40	140	310	96	710	1570	152	3550	7850	108	18000	39700	264	90000	198500
41	145	320	97	730	1610	153	3650	8050	209	18500	40800	265	92500	204000
42	150	330	98	750	1650	154	3750	8250	210	19000	41900	266	95000	209500
43	155	340	99	775	1710	155	3875	8550	211	19500	43000	267	97500	215000
44	160	355	100	800	1760	156	4000	8800	212	20000	44100	268	100000	220500
45	165	365	101	825	1820	157	4125	9100	213	20600	45400	269	103000	227000
46	170	375	102	850	1870	158	4250	9350	214	21200	46700	270	106000	233500
47	175	385	103	875	1930	159	4375	9650	215	21800	48100	271	109000	240500
48	180	395	104	900	1980	160	4500	9900	216	22400	49400	272	112000	247000
49	185	410	105	925	2040	161	4625	10200	217	23000	50700	273	115000	253500
50	190	420	106	950	2090	162	4750	10500	218	23600	52000	274	118000	260000
51	195	430	107	975	2150	163	4875	10700	219	24300	53600	275	121000	267000
52	200	440	108	1000	2200	164	5000	11000	220	25000	55100	276	125000	275500
53	206	455	109	1030	2270	165	5150	11400	221	25750	56800	277	128500	283500
54	212	465	110	1060	2340	166	5300	11700	222	26500	58400	278	132000	291000
55	218	480	111	1090	2400	167	5450	12000	223	27250	60000	279	136000	300000

# TON-MILE-PER-HOUR

## THE TMPH FORMULA

Ton-Miles-Per-Hour (TMPH) measurements and ratings are used as guidelines so that tires do not overheat. It is important to calculate job TMPH requirements before every job. To prevent heat damage and premature tire removal due to excessive heat, make sure tires are rated at or above the job requirements.

Here's the formula to determine the Ton-Mile-Per-Hour Rating: Multiply the Average Tire Load times the Average Shift Speed per hour.

**TMPH Job Rate = Average Tire Load × Average Shift Speed**

$$\text{Average Tire Load} = \frac{\text{"Empty" Tire Load in Tons} + \text{"Loaded" Tire Load in Tons}}{2}$$

$$\text{Average Shift Speed} = \frac{\text{Round Trip Distance in Miles} \times \text{Number of Trips}}{\text{Total Hours (in the shift)}}$$

## SAMPLE TMPH CALCULATION

### CONDITIONS

Empty vehicle tire load = 20,000 pounds (10.0 tons)

Loaded vehicle tire load = 34,000 pounds (17.0 tons)

Number of Hours Worked = 8.0 hours

The shift hauls 15 loads

Each haul is 9.0 miles, round trip

### CALCULATION

$$\text{Average Tire Load} = \frac{10 \text{ Tons} + 17 \text{ Tons}}{2} = 13.5 \text{ Tons}$$

$$\text{Average Shift Speed} = \frac{9 \text{ Miles/Trip} \times 15 \text{ Trips/Shift}}{8.0 \text{ Hours Worked/Shift}} = 16.9 \text{ MPH}$$

**JOB TMPH: 13.5 Tons × 16.9 MPH = 228 TMPH**

## TON-MILES-PER-HOUR SUMMARY

The Ton-Miles-Per-Hour formula helps to maintain optimum performance from Double Coin earthmover tires. TMPH helps you calculate the load-speed-time factor that's within tire temperature specifications. All Double Coin earthmover tires have a designated TMPH limit. Earthmover haul jobs operate at various TMPH rates, based on load, distance and the time involved for round trips. Therefore it is critical to determine each job's haul rate and compare it to each tire's TMPH rate limit.

For haul distances in excess of 20 miles one way, consult your Double Coin Representative.

TKPH (METRIC) = Average Load (Metric Tons) × Average Speed (Km/h)

If electronic vehicle monitors are available for use, Double Coin uses a four hour rolling average TMPH/TKPH to determine SITE requirements.

## CONCLUSION

**To avoid heat issues, tires must have a TMPH rating of 228 or higher.**

If the tires on the machine are rated less than 228:

- Reduce speed
- Reduce load
- Change to tires with a higher TMPH rating

## NOTE

Each tire position on the machine must be calculated and considered. Position with the highest average load should be used.

# IDENTIFICATION OF EARTHMOVER TIRES

## MAXIMUM PLY RATING (PR) AND CORRESPONDING STAR (★) MARKING

TIRE SIZE	STAR MARKING	WORK MACHINES PR	TRANSPORT MACHINES PR
7.50R15		12	
8.25R15		12	
27×8.50R15			
10.00R15			
350/65R15*			
14.5R15			
400/80R15*			
10R16.5			
12R16.5			
18R19.5	★	16	
9.00R20		16	
10.00R20		16	
C20PII (11/80R20)*			
12.00R20		18	
E20 (13/80R20)*			
14.00R20*			
16.00R20			
525/70R20.5			
24R20.5			
24R21			
15R22.5	★	16	
18R22.5	★	16	
12.00R24	★★★	24	24
13.00R24 TG	★	14	
14.00R24 TG	★	16	
14.00R24	★	24	
14.00R24	★★★	28	32
15.00R24 (17/80R24)*			
16.00R24 TG	★	16	
16.00R24	★★		36
555/70R24 TG*	★		

TIRE SIZE	STAR MARKING	WORK MACHINES PR	TRANSPORT MACHINES PR
13.00R25	★★★		28
14.00R25	★★★		32
15.5R25	★		16
16.00R25	★★		36
17.5R25	★	16	
17.5R25	★★	20	24
18.00R25	★	24	
18.00R25	★★		36
20.5R25	★	24	
20.5R25	★★		28
550/65R25*	★		
21.00R25	★★		40
23.5R25	★	28	
23.5R25	★★		32
600/65R25*	★		
25/65R25	★★		32
650/65R25*			
26.5R25	★	32	
26.5R25	★★		32
750/65R25*			
29.5R25	★	34	
29.5R25	★★		34
850/65R25*			
26.5R29	★★		34
775/65R29*			
29.5R29	★	34	
29.5R29	★★		40
30/65R29	★	28	
33.25R29	★★		44
800/65R29*	★		
875/65R29*			
18.00R33	★★		40
21.00R33	★★		32

TIRE SIZE	STAR MARKING	WORK MACHINES PR	TRANSPORT MACHINES PR
33.5R33	★★		44
35/65R33	★		36
35/65R33	★★		
37.5R33	★★		48
21.00R35	★★		44
24.00R35	★★		48
29.5R35	★★		40
33.25R35	★★		44
37.25R35	★★		48
37.5R39	★★		52
40/65R39	★	42	
40.5/75R39	★★		54
45/65R39*	★		
45/65R45	★	50	
24.00R49	★★		48
27.00R49	★★		54
31/80R49*	★★		
30.00R51	★★		64
33.00R51	★★		68
36.00R51	★★		74
27.00R56.5*	★★		
37.00R57*	★★		
40.00R57	★★		78
44/80R57*	★★		
50/80R57*	★★		
55/80R57*	★		
50/90R57*	★★		
60/80R57*			
53/80R63*	★★		
55/80R63*	★★		
58/80R63*	★★		
56/80R63*	★★		
59/80R63*	★★		

\* No corresponding ply rating in these sizes which are only made in radial construction

# TECHNICAL SERVICE BULLETINS

## OTR TECHNICAL SERVICE BULLETIN

July 1, 2009 – TSB-0901

### Double Coin Technical Bulletin for all models of Radial Off-The-Road Tires

Please be advised that the following guidelines should be followed when utilizing any Double Coin Small, Large or Giant Radial Off-The-Road (OTR) Tires:

- Any increase in air pressure beyond 116psi requires approval from CMA OTR Department prior to placing tires in service

- Published inflation pressures specified in Double Coin Data Book are cold inflation pressure only and are at prevailing atmospheric pressure
- Please refer to Tire and Rim Association (TRA) data as a reference only when using Double Coin OTR tires
- Please refer to TRA recommendations for Gross Vehicle Weight (GVW)
- Vehicle Weight plus Load = GVW

- Each application will vary depending on density of material, speed, distance, etc.; refer to TRA guidelines for proper inflation

If you have any questions concerning these or other guidelines for Double Coin OTR products, please contact Double Coin/CMA engineering.

**Double Coin/CMA Technical Inquiry Line  
1-888-226-5250**

## REM-8 TECHNICAL SERVICE BULLETIN

January 1, 2012 – TSB0112

### Double Coin Technical Bulletin for REM-8 High Speed Mobile Crane Tires; Restricted Speeds and Distances

Please be advised of the following guidelines when utilizing any Double Coin REM-8 High Speed Mobile Crane tires.

#### Restricted Maximum Speed:

- All REM-8 tires have a maximum speed rating of 55 mph (88.5 kph).
- REM-8 tires are not rated to exceed 55 mph (88.5 kph) under any circumstance or any load or pressure.

#### Restricted Maximum Distance:

- Double Coin engineering documents state if a mobile crane is in continuous movement or travel speeds for one hour or more, different limitations apply.
- In continuous travel, tires may not travel over 40 miles in one hour (65 kilometers in one hour).
- Double Coin recommends a cool down period of 15 minutes per hour for long distance travel.

These restrictions are on all REM-8 tires, regardless of size. Evidence of excess speed/distance may void the Double Coin warranty on these tires.

If you have any questions concerning these or other guidelines on Double Coin REM-8 High Speed Mobile Crane products, please contact Double Coin/CMA engineering.

**Double Coin/CMA Technical Inquiry Line  
1-888-226-5250**

# LIMITED MANUFACTURER'S WARRANTY

## LIMITED WARRANTY

Double Coin Radial Off-The-Road Limited  
Manufacturer's Warranty January 1, 2018

## WHO IS ELIGIBLE FOR WARRANTY COVERAGE

You are eligible for the benefits of this warranty if you meet all the following criteria:

- You are the owner or authorized agent of the owner of new Double Coin Radial OTR tires.
- Your Double Coin Radial OTR tires are not branded "NA" (Not Adjustable).
- Your Double Coin Radial OTR tires have been used only on the equipment on which they were originally installed according to the equipment manufacturers or Double Coin's recommendations. Your tires were purchased on or after January 1, 2006.

## WHAT IS COVERED UNDER THIS WARRANTY AND FOR HOW LONG

### PRORATED TIRE REPLACEMENT

Double Coin Radial OTR tires covered by this warranty that become unserviceable due to a defect in workmanship or material during the life of the original usable tread will be reimbursed to the owner on a prorated basis. The life of the original usable tread is defined by when the tire tread has worn down to 10% of the original tread depth, at which point the tire is considered to be fully worn out.

- The defective Double Coin tire must be replaced with a comparable new Double Coin tire by an authorized Double Coin Radial OTR tire dealer.
- Blemished, Non-Adjustable (stamped on tire), re-treads or road hazard tires are specifically excluded

## HOW TO CALCULATE THE PRORATED AMOUNT

The replacement price will be calculated by multiplying the current Double Coin "predetermined price for adjustment" or current advertised selling price at the adjustment location (whichever is lower) by the percentage of usable original tread that has been worn off at the time of adjustment. Please refer to the chart below for calculation of prorated credit. You pay for mounting and any other applicable taxes and fees for the comparable new Double Coin replacement tire.

## WHAT THIS WARRANTY DOES NOT COVER

Irregular wear or tire damage due to:

- Road hazards (including punctures, cuts, snags, impact breaks, etc.)
- Wreck, collision, or fire.
- Improper inflation, overloading, high speed spinup,

misapplication, misuse, negligence, racing, chain damage, or improper mounting or demounting.

- Mechanical condition of the equipment.
- Tires with weather cracking are not covered.
- This limited warranty is applicable only in the United States, Mexico, and Canada. Any tire used or equipped on equipment registered or operated outside the U.S., Mexico, and Canada are not covered by this warranty.
- Tire branded or marked "Non-Adjustable" (N/A) or "Blemished" (Blem), or previously adjusted.

Failure, damage, or irregular wear due to:

- Accident or vandalism
- Mechanical condition of equipment
- Misapplication of tire
- Alteration of the tire or addition of alien material or transfer from one machine equipment to another
- Loss of time or use, inconvenience, or any incidental or consequential damages
- Material added to a tire after leaving a factory producing Double Coin tires: (example: tire fillers, sealants, or balancing substance). If the added material is the cause of the tire being removed from service, the tire will not be adjusted.
- Loss of time, inconvenience, loss of use of equipment, incidental or consequential damage.

## YOUR LEGAL RIGHTS

Some states do not allow the exclusion or limitation of incidental or consequential damages, so the above limitation or exclusions may not apply to you.

No representative or dealer has authority to make any representation, promise, or agreement on behalf of Double Coin, except as stated herein.

Any tire, no matter how well constructed, may fail in service or otherwise become unserviceable due to conditions beyond the control of the manufacturer. Under no circumstances is this warranty a representation that a tire failure cannot occur.

This warranty gives you specific legal rights, and you may also have other rights that vary from state to state.

This limited warranty is applicable only in the United States, Mexico, and Canada.

## TO OBTAIN AN ADJUSTMENT

- You must present the tire to be adjusted to a current Double Coin Radial OTR Tire Dealer. (Please consult your telephone directory for locations or visit our dealer locator on our web at [www.doublecointires.com](http://www.doublecointires.com)).
- You must pay for taxes, fees or any additional services you order at the time of adjustment.

- No claim will be recognized unless submitted on a Double Coin claim form (supplied by the Double Coin Tire Dealer), completely filled out and signed by you, the owner of the tire presented for adjustment, or your authorized agent.

## FOR SERVICE ASSISTANCE OR INFORMATION

- First contact the nearest Authorized Double Coin Radial OTR Tire Dealer.
- If additional assistance is required:
  - Visit our website at: [www.doublecointires.com](http://www.doublecointires.com)
  - E-mail the Double Coin Customer Relations Department at: [info@doublecointires.com](mailto:info@doublecointires.com) or
  - Write to:
    - Double Coin Customer Assistance Service Department
    - 406 E. Huntington Drive, Suite 200
    - Monrovia, CA 91016

## SAFETY WARNINGS

Serious injury or property damage may result from:

- TIRE FAILURE DUE TO UNDERINFLATION/OVERLOADING.
- TIRE FAILURE DUE TO EXCESSIVE HIGH SPEED.
- EXPLOSION OF TIRE/RIM ASSEMBLY DUE TO IMPROPER MOUNTING. Only specially-trained persons should mount tires.
- FAILURE TO MOUNT RADIAL TIRES ON APPROVED RIMS
- FAILURE TO DEFLATE SINGLE OR DUAL ASSEMBLIES COMPLETELY BEFORE DISMOUNTING.
- TIRE SPINNING. On slippery surfaces such as snow, mud, ice, etc., do not spin tires. Personal injury and severe damage may result from excessive wheel spinning, including tire disintegration or axle failure.

## DOUBLE COIN

406 E. Huntington Drive, Suite 200  
Monrovia, CA 91016  
1-888-226-5250  
[www.DoubleCoinTires.com](http://www.DoubleCoinTires.com)

## AMOUNT OF CREDIT ISSUED TO THE CUSTOMER FOR WORKMANSHIP AND MATERIAL CONDITIONS

AGE OF TIRE	PERCENTAGE OF ORIGINAL TREAD DEPTH REMAINING							
	81% TO 100%	71% TO 80%	61% TO 70%	51% TO 60%	41% TO 50%	31% TO 40%	21% TO 30%	0% TO 20%
Less than 180 days	Actual%	70%	60%	50%	40%	30%	20%	0%
180 days to 1 year	80%	70%	60%	50%	40%	30%	10%	0%
Less than two years	75%	65%	60%	50%	40%	30%	10%	0%
Less than three years	50%	50%	40%	40%	40%	30%	10%	0%
Less than four years	40%	30%	30%	30%	30%	20%	10%	0%
Less than five years	20%	20%	20%	20%	20%	20%	10%	0%
More than five years	0%	0%	0%	0%	0%	0%	0%	0%

**TIE  
FO**

**DOUBLE COIN**





**RES BUILT  
OR EVERY**

**LOAD  
SITE**

**TERRAIN**

**TASK**

**OPERATOR**



**THE SMART MONEY IS ON**



Corporate office:  
406 E. Huntington Drive, Suite 200  
Monrovia, CA 91016 USA

Tel: 1 (888) 226-5250

[info@cmaintl.com](mailto:info@cmaintl.com)  
[www.DoubleCoinTires.com](http://www.DoubleCoinTires.com)