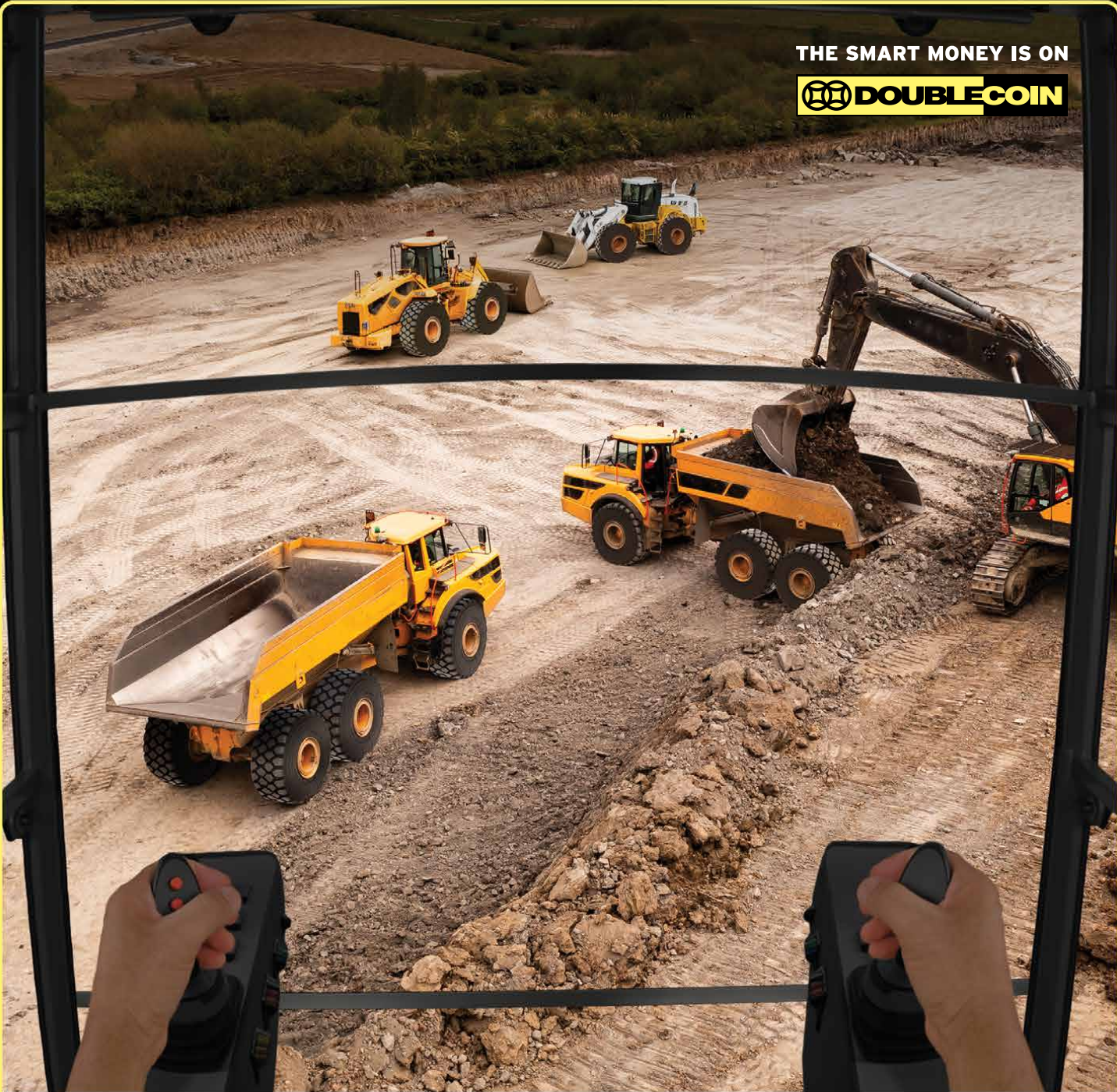


THE SMART MONEY IS ON



TIRES FOR MINES AND QUARRIES

REM-2, REM-9, REM-10, REM-12, REM-18, AND REM-19



THE SMART MONEY IS ON



REM-2

(E3/L3) EARTHMOVER/LOADER TIRE

The Double Coin REM-2 Off-The-Road radial features an aggressive self-cleaning tread design. Engineered to deliver a smooth ride and superior traction in all types of terrain, the REM-2 is an OEM Certified OTR with an advanced casing design that promotes retreadability.



PRODUCT CODE	TIRE SIZE	PATTERN	LOAD SYMBOL	SPEED MAX (KM/H)	SPEED MAX (MPH)	OVERALL DIAMETER (INCH)	SECTION WIDTH (INCH)	TREAD DEPTH (32NDS)	RIM	SINGLE MAX LOAD/PRESSURE	TIRE WEIGHT	TIRE TYPE
1107167251	17.5R25	REM-2	★★	50 10	30 5	53	18	34	14.00/1.5	11990lb/76psi 18700lb/94psi	157kg/338lb	TL
1107160251	20.5R25	REM-2	★★	50 10	30 5	58	21	39	17.00/2.0	16060lb/76psi 25300lb/94psi	231kg/491lb	TL
1107163251	23.5R25	REM-2	★★	50 10	30 5	64	24	45	19.50/2.5	20350lb/76psi 31900lb/94psi	336kg/721lb	TL
1107166252	26.5R25	REM-2	★★	50 10	30 5	69	27	47	22.00/3.0	25300lb/76psi 40700lb/94psi	463kg/1023lb	TL
1107162955	29.5R25	REM-2	★★	50 10	30 5	73	29	50	25.00/3.5	30800lb/76psi 49280lb/94psi	587kg/1274lb	TL
1107167565	750/65R25	REM-2	★★	50 10	30 5	64	30	54	24.00/3.0	23320lb/61psi 40700lb/90psi	460kg/ 1014lb	TL
1107167765	775/65R29	REM-2	★★	50 10	30 5	68.9	30.3	58	24.00/3.5	26786lb/61psi 45415lb/90psi	475kg/1045lb	TL
1107168765	875/65R29	REM-2	★★	50 10	30 5	73.8	35	60	28.00/3.5	34171lb/61psi 56769lb/90psi	670kg/1474lb	TL

REM-18

(L5) LOADER TIRE

loader applications. This OTR tire is constructed with special chip and cut resistant compounds to promote extended original tread life and long-term retreadability. Designed with a wide footprint and center rib for stability, the REM-18 OTR features a directional tread design for increased forward traction.



PRODUCT CODE	TIRE SIZE	PATTERN	LOAD SYMBOL	SPEED MAX (KM/H)	SPEED MAX (MPH)	OVERALL DIAMETER (INCH)	SECTION WIDTH (INCH)	TREAD DEPTH (32NDS)	RIM	SINGLE MAX LOAD/PRESSURE	TIRE WEIGHT	TIRE TYPE
1087183532	35/65R33	REM-18	★★	10	5	81	37	123	28.00/3.5	60076lb/94psi	1026kg/2255lb	TL

THE SMART MONEY IS ON



REM-12

(L5) MINING LOADER TIRE

Built with special cut/chip resistant compounds to withstand severe rock mining applications and promote long-term retreadability, the Double Coin REM-12 OTR has a unique non-directional tread design for optimum performance, and superior traction.



PRODUCT CODE	TIRE SIZE	PATTERN	LOAD SYMBOL	SPEED MAX (KM/H)	SPEED MAX (MPH)	OVERALL DIAMETER (INCH)	SECTION WIDTH (INCH)	TREAD DEPTH (32NDS)	RIM	SINGLE MAX LOAD/PRESSURE	TIRE WEIGHT	TIRE TYPE
1107127252	17.5R25	REM-12	★★	6	3	55	19	84	14.00/1.5	15620lb/73psi	251kg/563lb	TL
1107126253	26.5R25	REM-12	★★	10	5	71	27	116	22.00/3.0	33000lb/73psi	657kg/1452lb	TL
1107122956	29.5R25	REM-12	★★	10	5	75	31	126	25.00/3.5	39600lb/73psi	846kg/1672lb	TL

REM-19

(L5) LOADER TIRE

The Double Coin REM-19 is a radial OTR tire built for a wide variety of loader applications. Its special chip and cut resistant compounds promote an extended original tread life and promote long-term retreadability. Designed with a wide footprint and center rib for stability, this Off-the road tire features a non-directional tread design for additional traction in multiple applications.



PRODUCT CODE	TIRE SIZE	PATTERN	LOAD SYMBOL	SPEED MAX (KM/H)	SPEED MAX (MPH)	OVERALL DIAMETER (INCH)	SECTION WIDTH (INCH)	TREAD DEPTH (32NDS)	RIM	SINGLE MAX LOAD/PRESSURE	TIRE WEIGHT	TIRE TYPE
1087190251	20.5R25	REM-19	★★	10	5	61	21	91	17.00/2.00	25353lb/94psi	295kg/650lb	TL
1087193251	23.5R25	REM-19	★★	10	5	66	24	98	19.50/2.50	31967lb/94psi	451kg/995lb	TL
1087196253	26.5R25	REM-19	★★	10	5	71	27	116	22.00/3.0	40785lb/94psi	634kg/1397lb	TL
1087192955	29.5R25	REM-19	★★	10	5	75	31	126	25.00/3.5	49384lb/94psi	762kg/1628lb	TL



REM-9

(E4) HAULAGE TIRE



The Double Coin REM-9 OTR radial design offers special compounds to withstand severe mining applications, extend tire life and promote long-term retreadability. The REM-9 OTR tire is designed with a non-directional center rib tread pattern for enhanced off-the-road traction. Its deep tread depth also provides extended tread life in a wide variety of conditions.



PRODUCT CODE	TIRE SIZE	PATTERN	LOAD SYMBOL	SPEED MAX (KM/H)	SPEED MAX (MPH)	OVERALL DIAMETER (INCH)	SECTION WIDTH (INCH)	TREAD DEPTH (32NDS)	RIM	SINGLE MAX LOAD/PRESSURE	TIRE WEIGHT	TIRE TYPE
1087206252	26.5R25	REM-9 (A)	★★	50	30	70	27	69	22.00/3.0	25300lb/76psi	540kg/1155lb	TL
1087206253	26.5R25	REM-9 (S)	★★	50	30	70	27	69	22.00/3.0	25300lb/76psi	540kg/1155lb	TL
1087206254	26.5R25	REM-9 (B)	★★	50	30	70	27	69	22.00/3.0	25300lb/76psi	540kg/1155lb	TL
1087202955	29.5R25	REM-9 (A)	★★	50	30	75	30	76	25.00/3.5	30800lb/76psi	650kg/1397lb	TL
1087202956	29.5R25	REM-9 (S)	★★	50	30	75	30	76	25.00/3.5	30800lb/76psi	650kg/1397lb	TL
1087202957	29.5R25	REM-9 (B)	★★	50	30	75	30	76	25.00/3.5	30800lb/76psi	650kg/1397lb	TL
1087201833	18.00R33	REM-9 (A)	★★	50	30	73	20	69	13.00/2.5	23980lb/102psi	470kg/1012lb	TL
1087201834	18.00R33	REM-9 (S)	★★	50	30	73	20	69	13.00/2.5	23980lb/102psi	470kg/1012lb	TL
1087201835	18.00R33	REM-9 (B)	★★	50	30	73	20	69	13.00/2.5	23980lb/102psi	470kg/1012lb	TL
1087202452	24.00R35	REM-9 (A)	★★	50	30	85	26	87	17.00/3.5	40700lb/102psi	777kg/1698lb	TL
1087202453	24.00R35	REM-9 (S)	★★	50	30	85	26	87	17.00/3.5	40700lb/102psi	777kg/1698lb	TL
1087202454	24.00R35	REM-9 (B)	★★	50	30	85	26	87	17.00/3.5	40700lb/102psi	777kg/1698lb	TL
1087202135	21.00R33	REM-9 (B)	★★	50	30	77	22	69	15.00/3.0	30864lb/102psi	567kg/1250lb	TL

* Compounds: **A** cut/chip; **S** standard; **B** heat

REM-10

(E3/L3) HAULAGE/ARTICULATED TIRE



The OEM Certified REM-10 OTR tire features a multi-function, non-directional tread design for optimum performance. Designed for the rugged needs of articulating trucks, the REM-10 OTR is built with a unique center block tread design, that delivers superior off-the-road traction, and a smooth ride in all types of terrain.



PRODUCT CODE	TIRE SIZE	PATTERN	LOAD SYMBOL	SPEED MAX (KM/H)	SPEED MAX (MPH)	OVERALL DIAMETER (INCH)	SECTION WIDTH (INCH)	TREAD DEPTH (32NDS)	RIM	SINGLE MAX LOAD/PRESSURE	TIRE WEIGHT	TIRE TYPE
1087106252	26.5R25	REM-10	★★	50 10	30 5	69	27	51	22.00/3.0	25300lb/76psi 40700lb/94psi	463kg/1023lb	TL
1087102955	29.5R25	REM-10	★★	50 10	30 5	74	29	55	25.00/3.5	30800lb/76psi 49280lb/94psi	597kg/1285lb	TL

Double Coin has sales, distribution and branch offices in the USA, Mexico, Central America, and Canada.

USA Headquarters:
406 E. Huntington Drive, Suite 200
Monrovia, CA 91016 USA

Tel: 1 (626) 301-9575
1 (888) 226-5250
Fax: 1 (626) 301-9579

info@DoubleCoinTires.com
www.DoubleCoinTires.com