

TRUCK TIRE DATA COMPARISON CHART

THE SMART MONEY IS ON



STEER

8

FR610
OptiGreen Series



- Bridgestone R283A Ecopia
- Goodyear Endurance LHS, Marathon LHS
- Michelin X Line Energy Z, XZA3+ Evertread
- Continental EcoPlus HS3, HSL2 Eco Plus
- Yokohama 101ZL Spec2 RY617

8

FR605
OptiGreen Series



- Bridgestone R283A Ecopia
- Goodyear Endurance LHS, Marathon LHS
- Michelin X Line Energy Z, XZA3+ Evertread
- Continental EcoPlus HS3, HSL2 Eco Plus
- Yokohama 101ZL Spec2 RY617

9

RR680



- Bridgestone R268 Ecopia, R250ED
- Goodyear Fuel Max RSA, Marathon RSA & RSS
- Michelin X Multi Energy Z, XZE2
- Continental HSR2 Eco Plus, HSR2, CrossTrac HA3
- Yokohama 104ZR, 108R, RY023

9

RT600



- Bridgestone R238
- Goodyear Endurance RSA, G647 RSS
- Michelin XZE
- Continental HSR, Hybrid HS3
- Yokohama RY023, 104ZR

10

RR150



- Bridgestone R250ED, R196
- Goodyear G619RST
- Michelin XTE
- Continental HTR2
- Yokohama RY103

10

RT606+



- Bridgestone R268 Ecopia, R250ED
- Goodyear Endurance RSA, Marathon RSA & RSS
- Michelin XZE2, X Multi Energy Z
- Continental HSR2, CrossTrac HA3
- Yokohama 104ZR, 108R, RY023

11

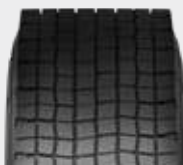
FD405
OptiGreen Series



- Bridgestone M710 Ecopia, M760 Ecopia
- Goodyear Endurance LHD, Marathon LHD
- Michelin X Line Energy D, XDA Energy+
- Continental HDL2, HDL2 DL Eco Plus, HDL Eco Plus
- Yokohama 703ZL, TY577 MC2

11

FD425
OptiGreen Series



- Michelin X One Line Energy D, X One Line Grip D
- Goodyear Fuel Max SSD Dura Seal
- Bridgestone Greatec M835A Ecopia
- Continental HDL2 Eco Plus
- Yokohama 902L UWB

12

RLB400



- Bridgestone M726 ELA, M726
- Goodyear G622 RSD, Marathon RSD
- Michelin XDA5+, XDN2, X Multi D
- Continental HDL2 DL, Conti Hybrid HD3
- Yokohama TY517, TY527

DRIVE

12

RLB452

- Bridgestone M770, M799
- Goodyear G182 RSD, G182 RSD GHG, G282 MSD
- Michelin XDE M/S
- Continental HDR2, HDR2 Eco Plus
- Yokohama SY767

13

RLB490

- Bridgestone M724F
- Goodyear G622 RSD, G622 RSD ULT
- Michelin XDS2
- Continental HDR, Hybrid HD3
- Yokohama TY303, TY287

13

RLB1/RLB11

- Bridgestone M770, M799, M729F
- Goodyear G182 RSD, G282 MSD, G177
- Michelin X Multi D
- Continental HDR2
- Yokohama SY767

14

RSD1

- Bridgestone W919, M770, M799
- Goodyear G182 RSD GHD
- Michelin XDS, XDS2
- Continental HDW2
- Hankook DW02, DL12
- Aeolus ADW80, ADW81

14

RLB450 

- Bridgestone M770, M799, M729F
- Goodyear G182 RSD, G282, G282 MSD, G177
- Michelin X Multi D
- Continental HDR2
- Yokohama SY767

15

RSD3

- Bridgestone W919, M770, M799
- Goodyear G182 RSD GHG
- Michelin XDS, XDS2
- Continental HDW2
- Hankook DW02, DL12
- Aeolus ADW80, ADW81

15

RLB800

- Bridgestone M775, L320, L317 (NHS)
- Goodyear Armor Max Pro Grade MSD, G741 MSD, Workhorse MSD
- Michelin X Works XDY
- Continental HDC1, HDC1 HT
- Yokohama LY053

16

RLB600

- Bridgestone M775, L320
- Goodyear Armor Max Pro Grade MSD, G741 MSD, Workhorse MSD
- Michelin X Works Grip D, XDY-EX2
- Continental HDC1, HDC1 HT, HDO
- Yokohama LY053

TRAILER

17

FT105
OptiGreen Series


- Bridgestone R197 Ecopia
- Goodyear 316 LHT Fuel Max, Marathon LHT
- Michelin X Line Energy T
- Continental EcoPlus HT3
- Yokohama BluEarth 109L, RY587

17

FT115
OptiGreen Series


- Bridgestone R197 Ecopia
- Goodyear 316 LHT Fuel Max, Marathon LHT
- Michelin X Line Energy T
- Continental EcoPlus HT3
- Yokohama BluEarth 109L, RY587

18

FT125+


- Bridgestone Greatec R135 Ecopia
- Michelin X One Line Energy T
- Goodyear Fuel Max SST DuraSeal
- Continental HTL1
- Yokohama BlueEarth 109L UWB

18

IM105


- Bridgestone R197 Ecopia
- Goodyear Fuel Max LHT
- Michelin X Line Energy T
- Continental EcoPlus HT3
- Yokohama RY587

19

TR100


- Bridgestone R197 Ecopia, R196
- Goodyear 316 LHT Fuel Max, Marathon LHT
- Michelin X Line Energy T
- Continental Eco Plus HT3
- Yokohama 109L, RY587

10*

RR150


- Bridgestone R250ED, R196
- Goodyear G619RST
- Michelin XTE
- Continental HTR2
- Yokohama RY103

15*

RLB800


- Bridgestone M775, L320, L317 (NHS)
- Goodyear Armor Max Pro Grade MSD, G741 MSD, Workhorse MSD
- Michelin X Works XDY
- Continental HDC1, HDC1 HT
- Yokohama LY053

16*

RLB600


- Bridgestone M775, L320
- Goodyear Armor Max Pro Grade MSD, G741 MSD, Workhorse MSD
- Michelin X Works Grip D, XDY-EX2
- Continental HDC1, HDC1 HT, HDO
- Yokohama LY053

20

RLB900+


- Bridgestone M870, M860A
- Goodyear Endurance WHA, G289 WHA
- Michelin X Works Z, XZU S2
- Continental CityService HA3
- Yokohama 104ZR Spec-2, MY627W Spec-2

20

RR202


- Bridgestone M8843, M860A
- Goodyear G751 MSA, G289 WHA, Endurance WHA
- Michelin X Works Z, XZY3, XZU S2
- Continental HSC1, CityService HA3
- Yokohama 104ZR Spec-2, MY627W Spec-2

MIXED SERVICE



Line Haul



Work



Regional



All-Season/Terrain



Fuel Efficient (SmartWay®)



Double Coin manufactures EPA SmartWay®-verified technologies

21

RR905

- Bridgestone R244
- Goodyear G296 MSA
- Michelin XFE Wide Base
- Continental HTR2
- Yokohama RY253

21

RR99/RR9

- Bridgestone M853, M843
- Goodyear G731 MSA, G751 MSA, Workhorse MSA
- Michelin X Works Z
- Continental HSC1
- Yokohama MY507

22

RR706

- Bridgestone M853, M843
- Goodyear G731 MSA, G751 MSA, Workhorse MSA
- Michelin X Works Z
- Continental HSC1
- Yokohama MY507

22

RT500

- Bridgestone R238, R250ED
- Goodyear Endurance RSA, G114
- Michelin XTA, XTE2, XZE, XTA2 Energy
- Continental HTL2 Eco Plus, HTR2
- Yokohama RY023

23

RLB980

- Bridgestone M864, M854
- Goodyear G296 MSA, 296 WHA
- Michelin XZY3 Wide Base
- Continental HTC1
- Yokohama MY507A, RY253

23

RR4

- Bridgestone M840, M857
- Goodyear G288MSA
- Michelin XZY
- Continental HSC1
- Yokohama MY547

23

RR716

- Cooper – Roadmaster RM230 WH
- Hankook AM09+, Toyo M320, Sumitomo ST528
- Bridgestone M860A
- Goodyear G289
- Michelin XZU S2

*Tire specifications are located in a previous category



Line Haul



Work



Regional



All-Season/Terrain



Fuel Efficient (SmartWay®)



Double Coin manufactures EPA SmartWay®-verified technologies

THE SMART MONEY IS ON



Double Coin has sales, distribution and branch offices in the USA, Mexico, Central America, and Canada.

USA Headquarters:

406 E. Huntington Drive, Suite 200
Monrovia, CA 91016 USA

Tel: 1 (626) 301-9575 or 1 (888) 226-5250
Fax: 1 (626) 301-9579

info@cmaintl.com